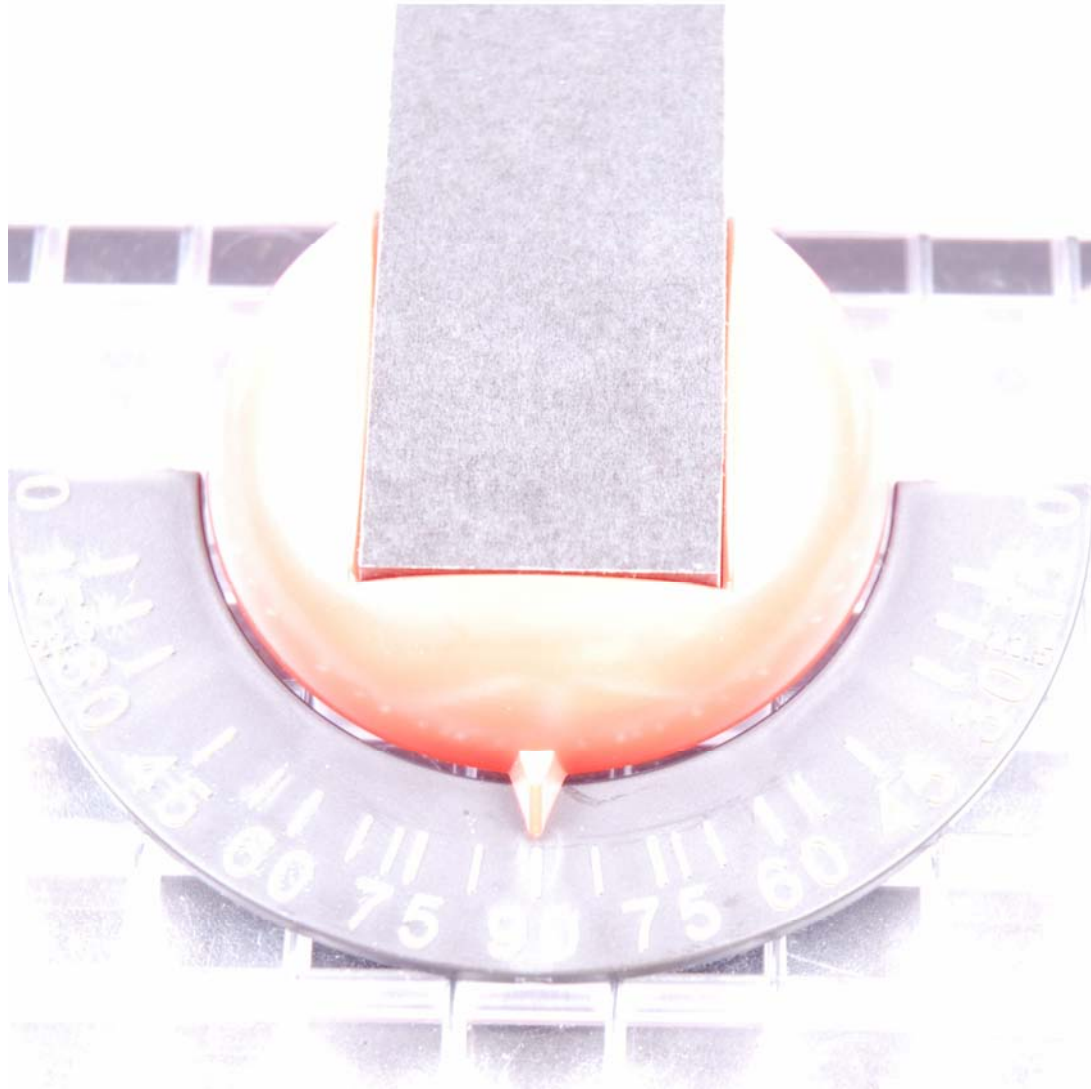


The Beetle Bits Glass Cutting System



By Creator's Stained Glass Inc.
25091 West Crabtree Lane
Ingleside, Illinois 60041 **USA**
Phone 847-477-3863
Visit us on the web at cuttersmate.com

SET UP

Set up is very easy with the Beetle Bits Glass Cutting System. Simply plug the modules into the Waffle Grid as shown below.

If you are not using all of the modules, it is a good practice to leave them plugged in along one edge of the Waffle Grid. Close enough to be in reach, but out of the way.

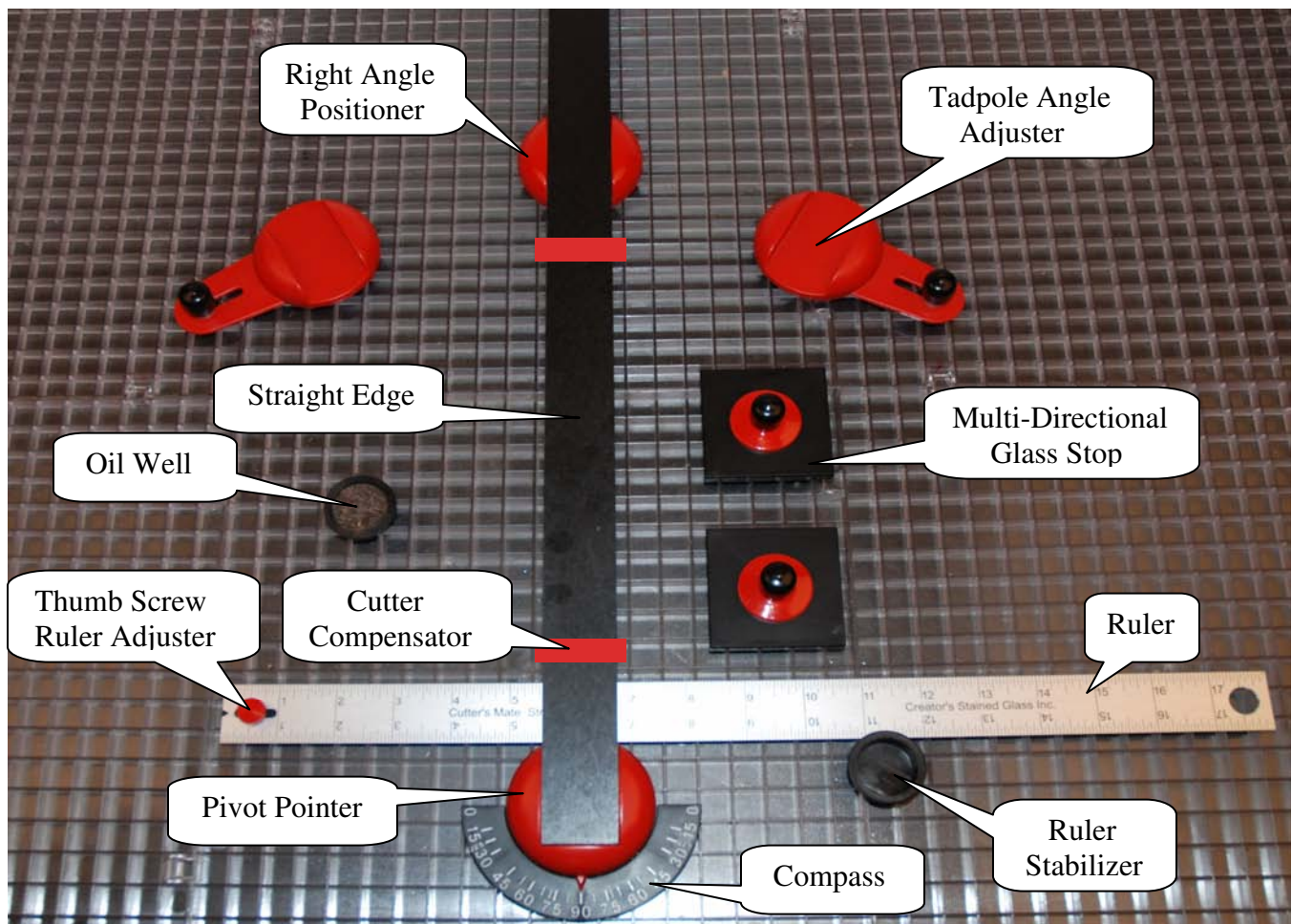
RULER CALIBRATION

The first thing you will need do is plug in and calibrate the ruler.

After **plugging in the ruler** to your desired location, **plug in the compass** and the **pivot pointer**, exactly in that order. The **pivot pointer** has a lip on the underside that will locate the ruler the same as the **ruler stabilizer**. To calibrate the ruler for squareness, all you need to do is loosen the red thumbscrew, press the ruler firmly against the ruler stabilizer and pivot pointer, then retighten the red thumbscrew.

To calibrate the ruler to your glass cutter, simply line up the glass **cutter compensator** to the origin point you have selected on the ruler.

You will need to loosen and retighten the red thumbscrew to do this also.



MAIN SET UP FIGURE

The following is an example for cutting 1 INCH STRIPS:

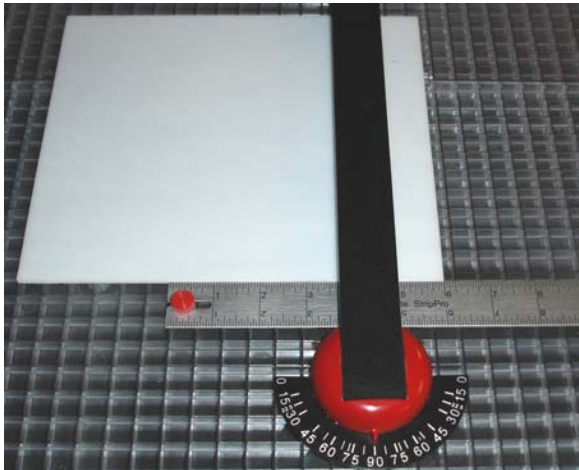


figure 1

1. Place the glass on the ruler. (figure 1) Any number can be your point of origin. Let's use the number 5 on the ruler as our point of origin. If we slide the glass right to the number 6 and make a score, we will have a **1 INCH** strip.

2. You may continue making consecutive scores by sliding the glass along the ruler to the next desired width.

HINT: It is much easier to look at the corner edge of the glass than to look at a score-line. Sometimes the score-line may not be visible.

SQUARES

The following is an example for cutting 3 INCH SQUARES:

1. Place the glass on the ruler. Any number can be your point of origin. Let's use the **number 5** on the ruler as our point of origin. If we slide the glass right to the **number 8** and make a score, we will have a **3 INCH STRIP**. (figure 1)

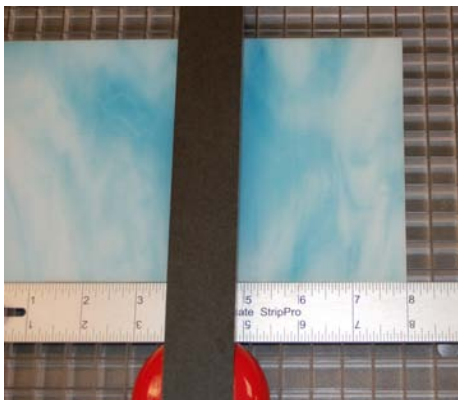


figure 1

2. Run your score and turn the glass 90 degrees. (figure 2) **Or** you may continue making consecutive scores for more squares by sliding the glass along the ruler to the next desired width.

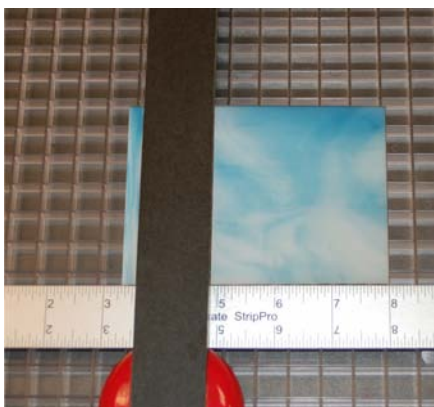
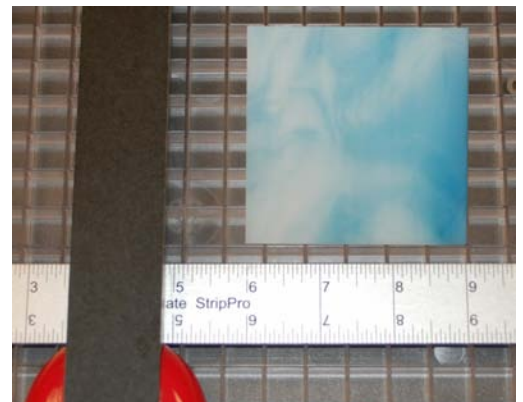


figure 2

3. Using the **number 5** on the ruler as our point of origin, slide the glass right to the **number 8** and make a score, we will have a **3 INCH SQUARE**. You may continue sliding the glass to desired numbers for more squares. (figure 2)



Finished Square

The following is an example for cutting a 3 inch high triangle:

1. Cut a 3 inch strip of glass. (figure 1)

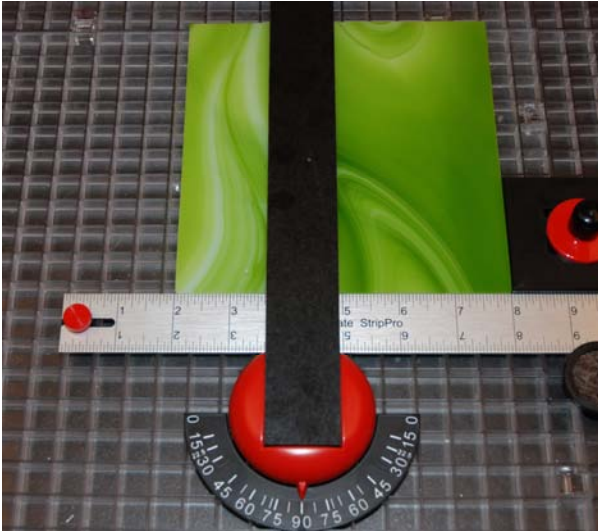


figure 1

2. Place the strip of glass on the ruler. Set the straight edge bar to the 60 degree mark on the compass. Make the first score along the straight edge. Run and break off the score.

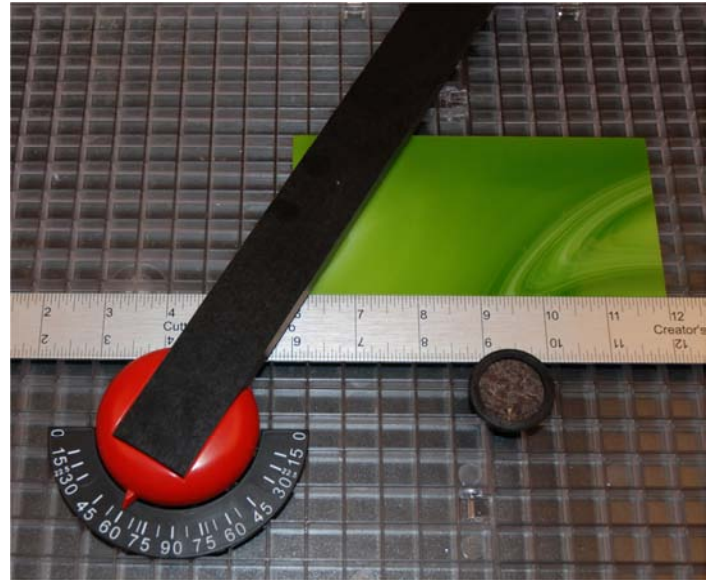


figure 2

3. Shift the straight edge to the other 60 degree angle mark on the compass. Line up the point of the first score to the glass cutter and score. (figure 3)

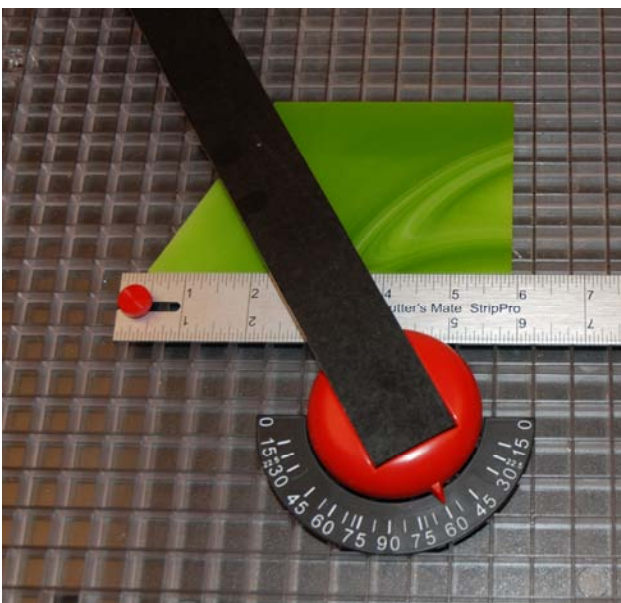


figure 3

4. The result will be an equal sided triangle. (figure 4)

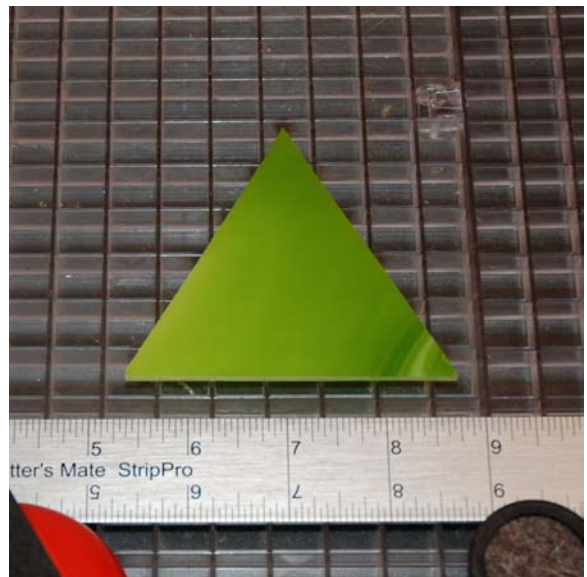


figure 4

The following is an example of a pattern diamond 4 inches high by 2 inches wide:

1. Using the **Diamond Master** sheet. (included AND downloadable at cuttersmate.com), draw and cut out your desired diamond. (figure 1)

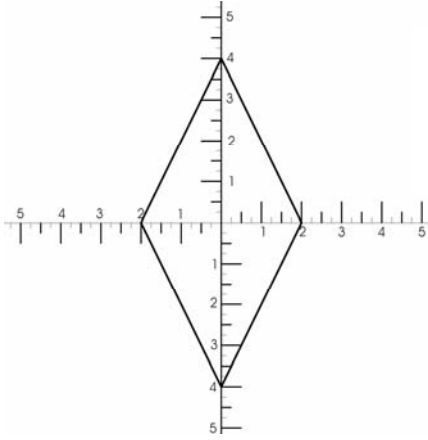


figure 1

2. To determine the width of the piece of glass you will need, place the cut-out on the ruler as shown below. (figure 2)

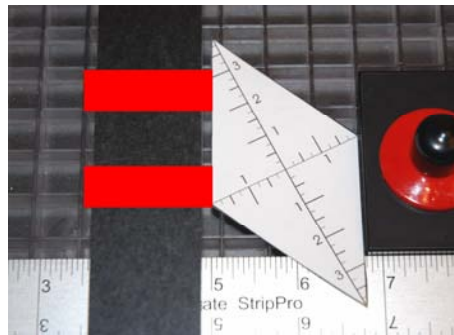


figure 2

3. Lock your glass stop to that position. Then cut your glass to that width. (figure 3)

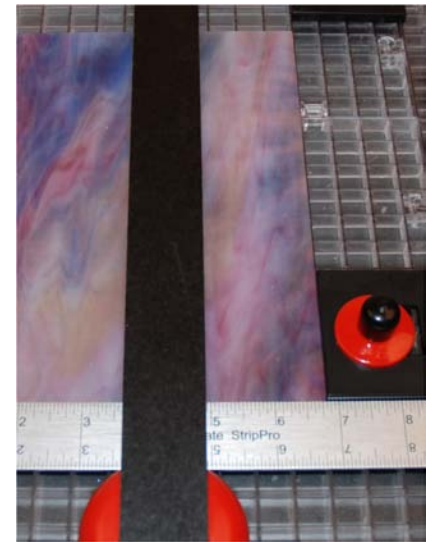


figure 3

4. Now place the cut-out on the cutting surface and align the straight edge to the proper angle. Tighten the tadpole straight-edge holder. Place the glass stop at the end of your paper diamond cut-out and tighten. (figure 4)

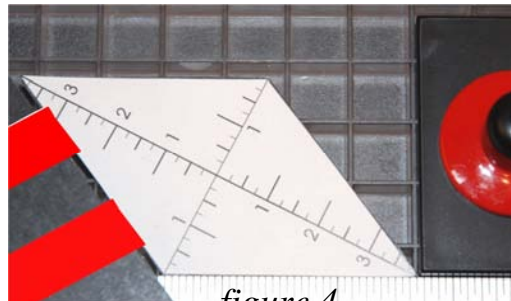


figure 4

5. Make your orientation cut on your strip of glass. (figure 5)

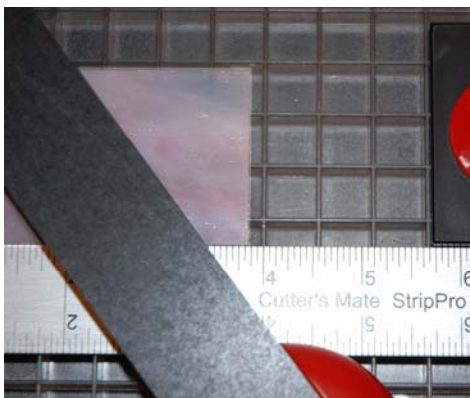


figure 5

6. Break off your first score and put the new edge against the glass stop. Score again and you will have your diamond. Repeat as many times as needed. (figures 6 and 7)

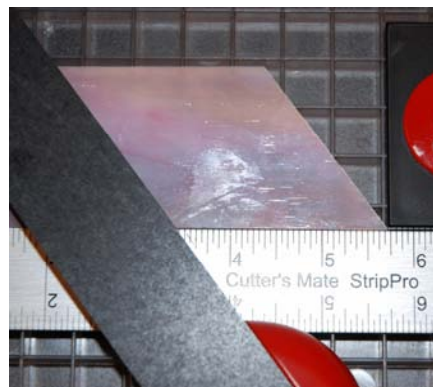


figure 6

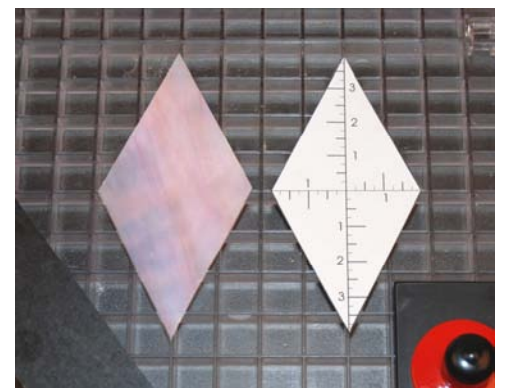


figure 7

The following is an example for cutting 1 inch mosaics.

1. Place the glass on the ruler. Any number can be your point of origin. Let's use the **number 7** on the ruler as our point of origin. **figure 1**

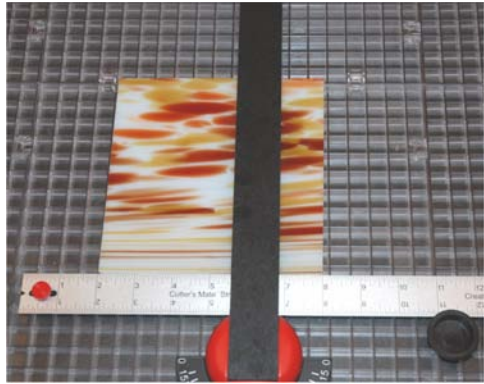


figure 1

2. If we slide the glass right to the **number 8** and make a score, we will have a **1 INCH STRIP**. Keep doing this at consecutive inch marks. Such as 9, 10, 11 etc.

figures 2 and 3

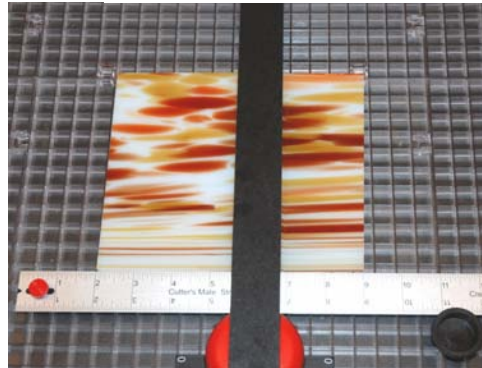


figure 2

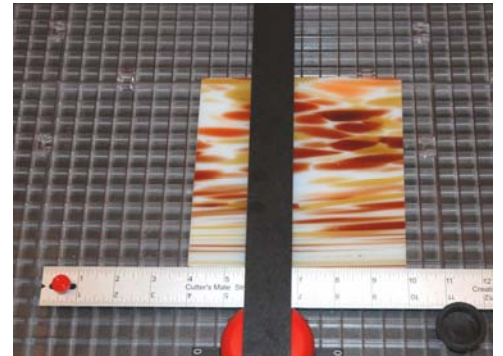


figure 3

3. Now, turn the glass over and rotate it 90 degrees.

Use the **number 7** on the ruler as our point of origin. **figure 4**

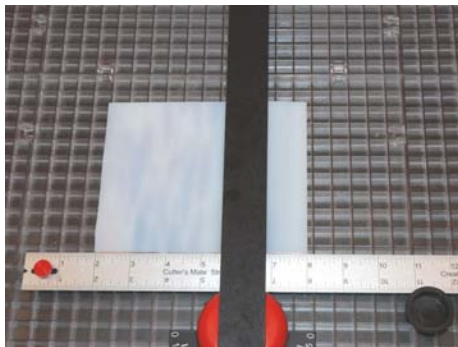


figure 4

4. If we slide the glass right to the **number 8** and make a score, we will have a **1 INCH SQUARE**. Keep doing this at consecutive inch marks. Such as 9, 10, 11 etc.

figures 5 and 6

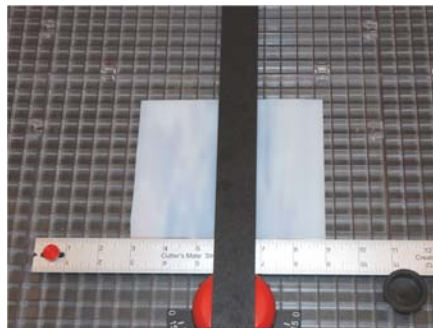


figure 5

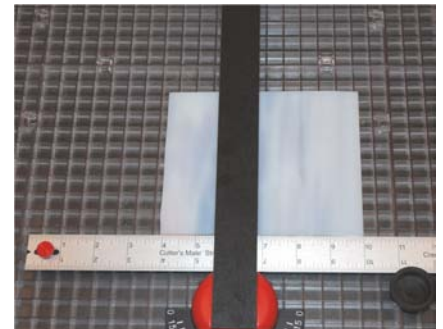


figure 6

5. Run all of the strips on one side of the glass. Turn over the glass and run all of the SQUARES on the other side. **figure 7**
By doing this, the corners will be cleaner and sharper. Also, there will be less wear on your cutting head. See note below.

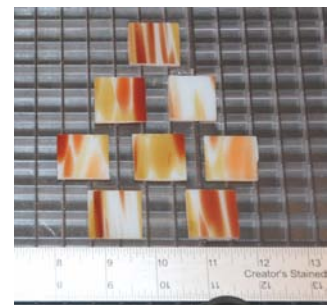


figure 7

Note, with textured glass, you may not be able to turn the glass over. You may only be able to rotate it 90 degrees.

Diamond Master

